

BX300

SPECIFICATIONS

Laser Source	
Laser Type	CO ₂ Laser
Wave length	10.600nm
Laser power	1 - 40W
Power Supply	220-240V~, 50/60 Hz
Cooling System	Water Cooling
Dimensions	500(W) x 390(D) x 1120(H)mm
Weight	60kgs
Display	10.2" Touch Screen Color LCD

Function – Fractional CO₂

Hand Piece Type	Fractional Hand Piece LVR Hand Piece(Optional)
Scan Size	2x2-20x20mm
Shape	Square, Hexagon, Triangular, Circular
Pattern	Array, Grid, Random
Depth	1-5 Level
Repeat Time	0.5-2.5sec, Single
Density	1-23 Level

Function – General CO₂

Hand Piece Type	50mm, 100mm Hand Piece E.N.T & Dental Hand Piece(Optional)
P.Duration	CW : 2-30ms Normal Pulse : 5-20ms Super Pulse : 1.0-4.0ms Ultra Pulse : 90-900 μ s
Repeat Time	off, 2-500ms
Operation Mode	CW, S.Continuous, Normal Pulse, Super Pulse, Ultra Pulse



BX300

Fractional CO₂ Laser System



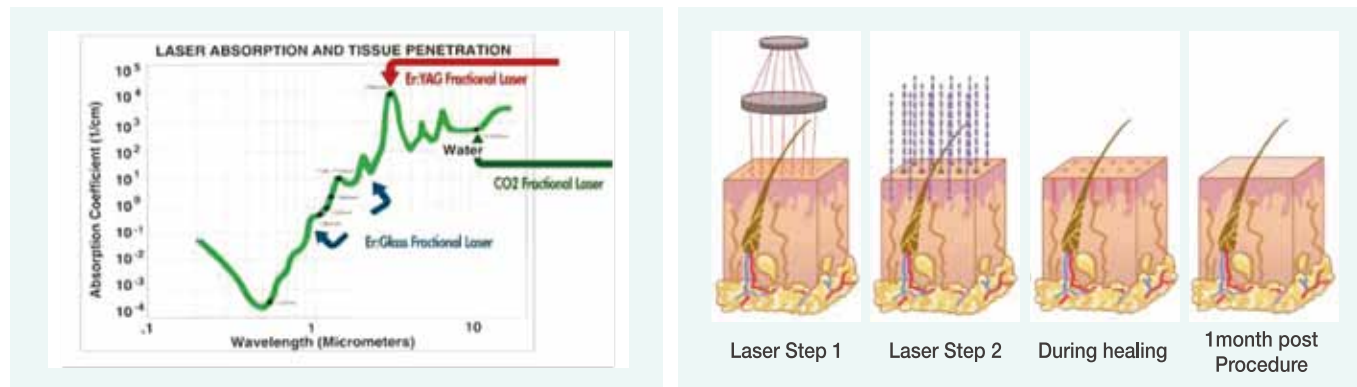
BX300

Introduction

- Fractional Laser uses fine laser beam to minimize skin damage by heat and to shorten the recovery and rejuvenation period. Therefore, the patients can resume normal daily activities soon after treatment.
- Fractional laser uses a CO2 tube to improve the effects of treatment. This CO2 tube has a long life time, stability and advantage of precise treatment.
- Treatment time can be shortened by adjusting spot size and the beam density, which is beneficial for both of the operator and the patient.

What is the Fractional?

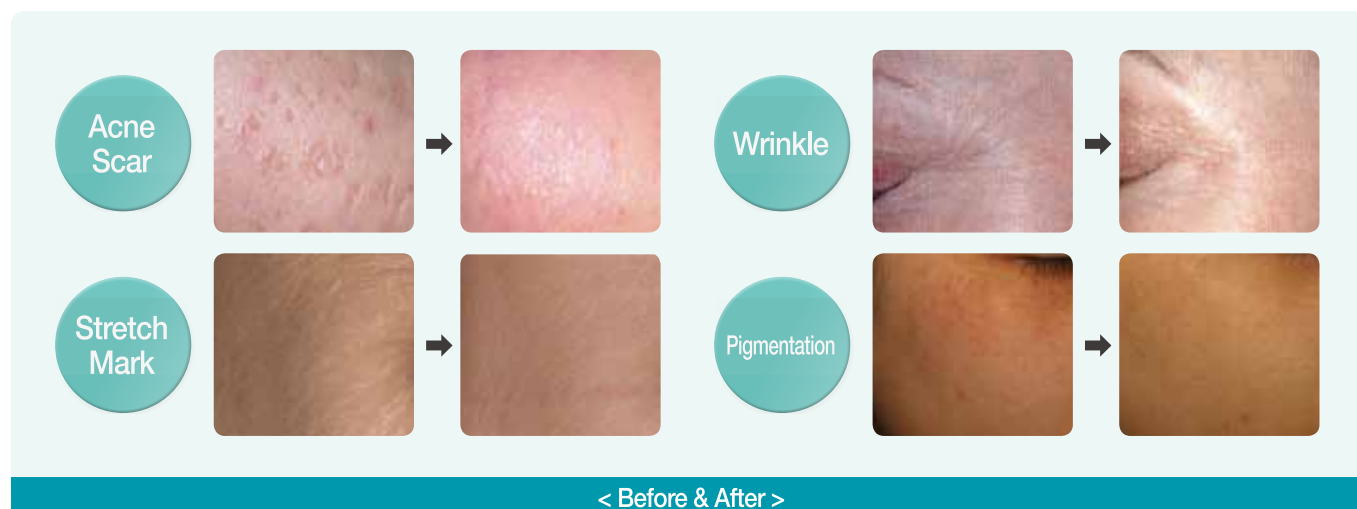
Dividing Laser beam very finely (smaller than hair) and irradiating to Epidermis fractionally makes many small thermal lesions to the skin structure without any serious damages. By this system, the skin will be recovered rapidly with no side effect and during this time the skin rejuvenated naturally.



Applications

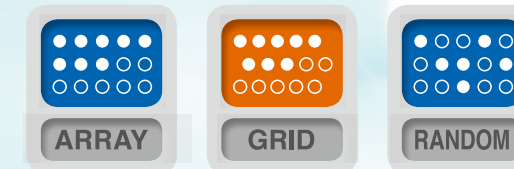
- Skin Tightening
- Acne Scar
- Warts / Mole
- Skin Resurfacing
- Large Pore
- Freckles
- Wrinkle
- Stretch Mark
- LVR(Laser Vaginal Rejuvenation)

Clinical Pictures (Before & After)

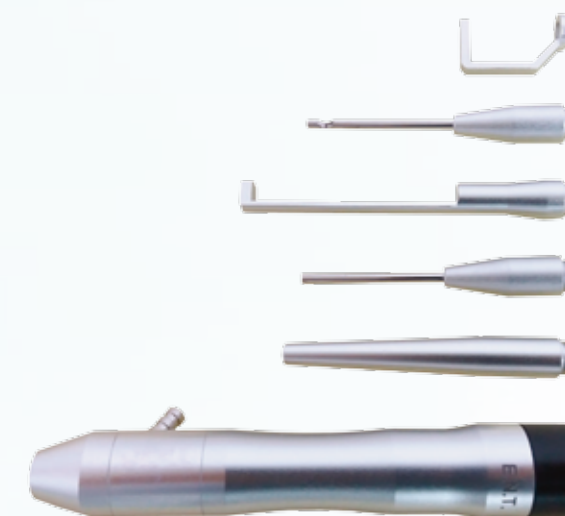
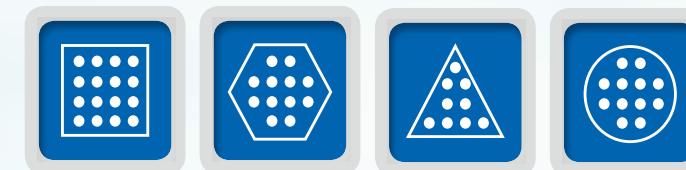


Features

- Fractional & Low Pain Fractional & General CO₂ mode
- Reduced Pain & Excellent effectiveness
- Three Patterns



- Smart & Various Protocols for use's convenience
- Max 4489 dots to an area of 20x20mm
- Various scan shapes



< E.N.T Hand piece >



< Dental Hand piece >

Smart Protocols

- General Surgery
- Dental Surgery
- Fractional CO₂ Laser
- Low Pain Fractional CO₂ Laser
- LVR(Laser Vaginal Rejuvenation)

MAIN MODE

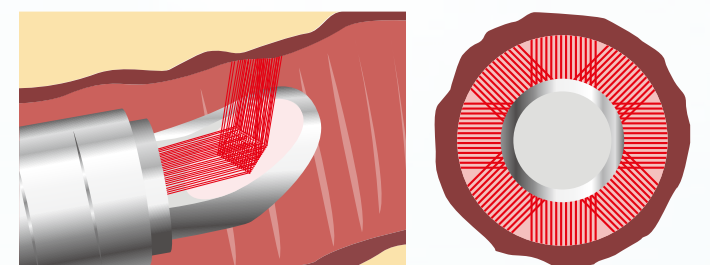
- General Mode
- Fractional Mode
- Low Pain Fractional Mode



< Manual LVR Hand piece >



< Auto LVR Hand piece >



< LVR Operating >